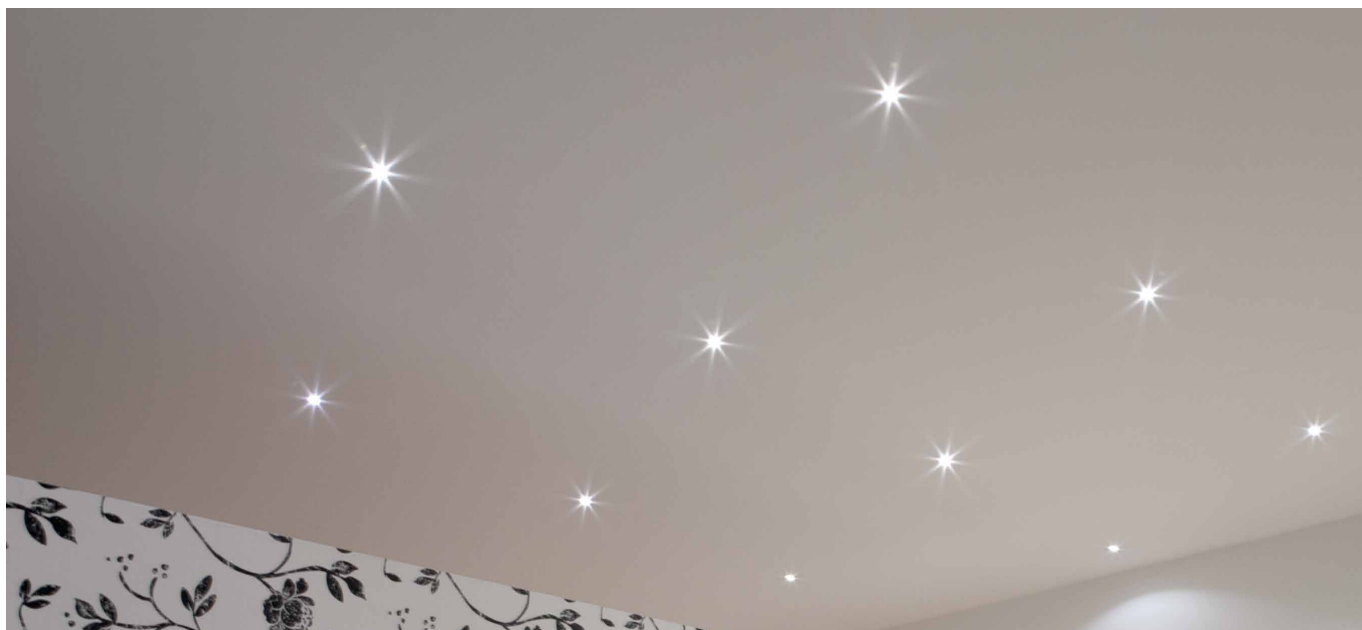


DUST KIT

KMQ.L93.



18-pack of the DUST model for decoration and courtesy lighting. Suitable for creating a 'starry sky' effect on an area of 1 square metre. The package includes the connection box and power supply. Can be installed indoors and outdoors if partially protected, spring-mounted.

3mm high-brightness LED

Power: 0.1W@3.2Vdc

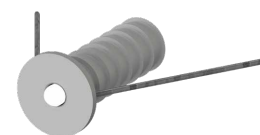
Lumen: 2Lm@3.2Vdc

Constant 12Vdc voltage supply and CNTG/18 box

Mandatory connection in multiples of three with CNTG box, cable 150 cm

Dimming Accessories page 249

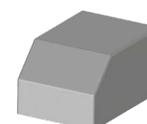
No. 18 DUST



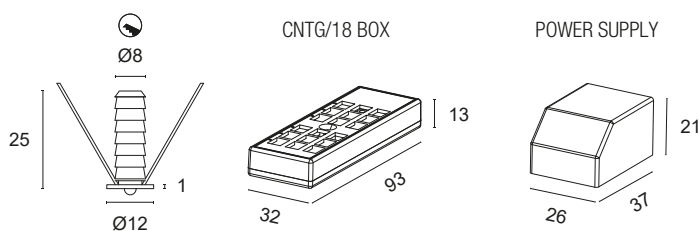
No. 1 CNTG/18 BOX



No. 1 POWER SUPPLY



 **MADE IN ITALY**



BASIC CODES

KMQ.L93.

FINISHES

- 1 White
- 2 Matt black
- 6 Chrome

LED COLOUR

- BF** 6000K
- BN** 4000K
- BC** 3000K
- BL** Blue
- VE** Green

Code example:

DUST KIT + White + 6000K = Code: KMQ.L93.1BF